



- 11,303 square feet
- \$13 / RSF / YR



- Full Service
- No load-bearing walls;
any reconfiguration possible



- 17+ Offices, Conference center included, break room, current furniture included



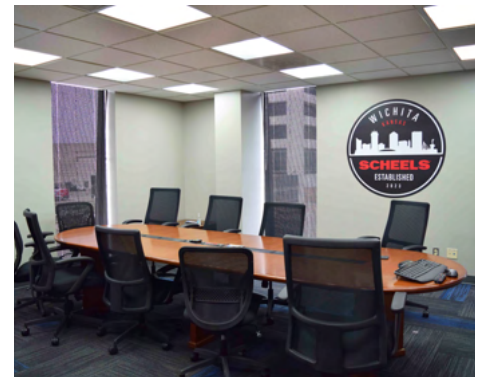
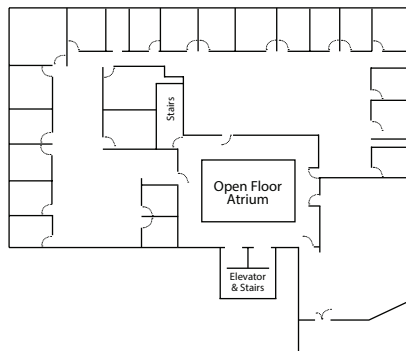
- **Parking included** in rate for tenants and visitors



220 W. Douglas, Suite 200

Office Space | Page Court Building

Floor Plan



To schedule a tour, email: larry@garveycenter.com

250 Douglas Place #100, Wichita KS 67202

(316) 261-5325 • garveycenter.com

Visit our website for a complete listing of available spaces



Garvey Center Amenities

- **Access to the rooftop** pool, pickleball & basketball courts, golf driving range & more!
- On-site **restaurants** for a variety of quick lunch options, plus 24-hour snack vending and Micro Market
- **FREE** 24-hour fitness facilities
- After hours **keyed access** with ring down phone access
- **Professional** management staff & 24-hour **emergency** maintenance staff
- Conference rooms with seating for **8-40 people** available to tenants at **no charge**

Visit our website for a complete listing of available spaces:
garveycenter.com

To schedule a tour, email:
larry@garveycenter.com