



- 1,887 square feet
- \$13 / RSF / YR



- Full Service
- No load-bearing walls;  
**any reconfiguration possible**



- **4 Large Offices**, Storage and Reception Area with Wet Bar



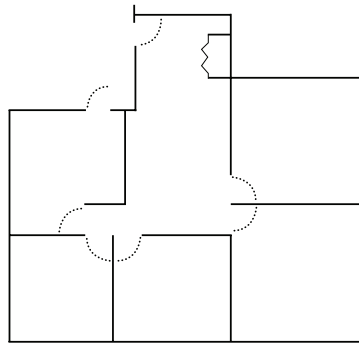
- **Parking included** in rate for tenants and visitors



## 300 W. Douglas, Suite 410

### Office Space | RH Garvey Building

Floor Plan



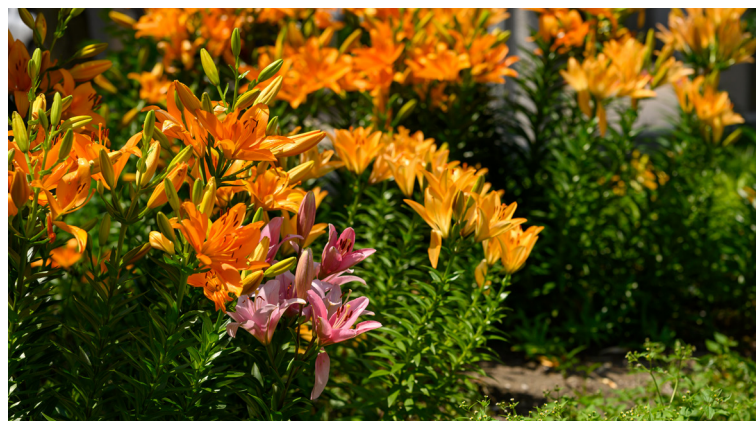
To schedule a tour, email: [larry@garveycenter.com](mailto:larry@garveycenter.com)

250 Douglas Place #100, Wichita KS 67202

(316) 261-5325 • [garveycenter.com](http://garveycenter.com)

Visit our website for a complete listing of available spaces





## Garvey Center Amenities

- **Access to the rooftop** pool, pickleball & basketball courts, golf driving range & more!
- On-site **restaurants** for a variety of quick lunch options, plus 24-hour snack vending and Micro Market
- **FREE** 24-hour fitness facilities
- After hours **keyed access** with ring down phone access
- **Professional** management staff & 24-hour **emergency** maintenance staff
- Conference rooms with seating for **8-40 people** available to tenants at **no charge**

Visit our website for a complete listing of available spaces:  
**[garveycenter.com](http://garveycenter.com)**

To schedule a tour, email:  
**[larry@garveycenter.com](mailto:larry@garveycenter.com)**