



- **1,980** square feet
- **\$13 / RSF / YR**



- Full Service
- Ready for you to customize for your needs



- **6 Offices & Support Area** with Wet Bar



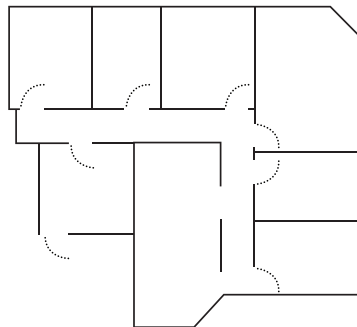
- **Parking included** in rate for tenants and visitors



## 200 W. Douglas, Suite 440

### Office Space | OW Garvey Building

#### Floor Plan



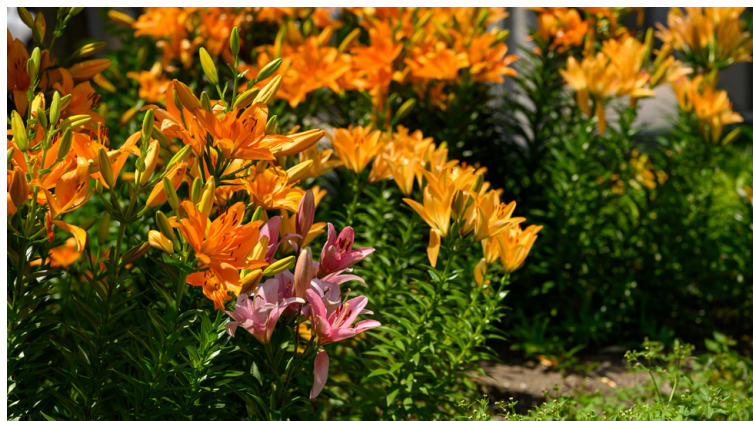
To schedule a tour, email: [larry@garveycenter.com](mailto:larry@garveycenter.com)

250 Douglas Place #100, Wichita KS 67202

(316) 261-5325 • [garveycenter.com](http://garveycenter.com)

Visit our website for a complete listing of available spaces





## Garvey Center Amenities

- **Access to the rooftop pool**, pickleball & basketball courts, golf driving range & more!
- **On-site restaurants** for a variety of quick lunch options, plus 24-hour snack vending and Micro Market
- **FREE** 24-hour fitness facilities
- After hours **keyed access** with ring down phone access
- **Professional** management staff & 24-hour **emergency** maintenance staff
- Conference rooms with seating for **8-40 people** available to tenants at **no charge**

Visit our website for a complete listing of available spaces:  
**[garveycenter.com](http://garveycenter.com)**

To schedule a tour, email:  
**[larry@garveycenter.com](mailto:larry@garveycenter.com)**