



- **3,033** RSF
- **\$13.75** / RSF / YR
- Option to expand to **5,600** RSF



- Full Service
- Ready for you to customize for your needs



- **6 offices**, training room, kitchenette, & tech room



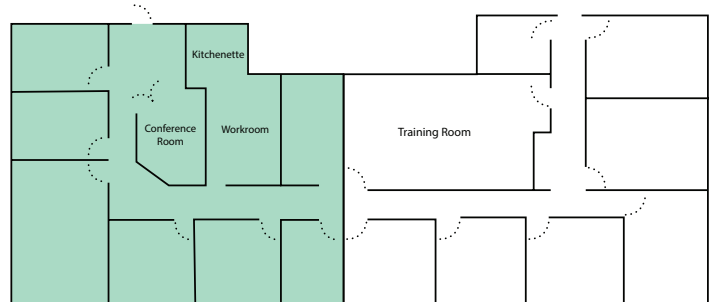
- **Parking included** in rate for tenants and visitors



300 W. Douglas, Suite 150

Office Space | RH Garvey Building

Floor Plan



Optional Expansion

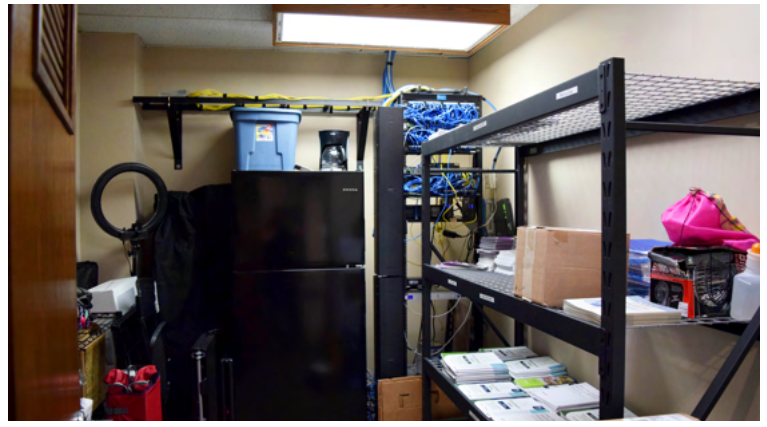
Suite 150



To schedule a tour, email: larry@garveycenter.com

250 Douglas Place #100, Wichita KS 67202
(316) 261-5325 • garveycenter.com

Visit our website for a complete listing of available spaces



Garvey Center Amenities

- **Access to the rooftop pool**, pickleball & basketball courts, golf driving range & more!
- **On-site restaurants** for a variety of quick lunch options, plus 24-hour snack vending and Micro Market
- **FREE** 24-hour fitness facilities
- After hours **keyed access** with ring down phone access
- **Professional** management staff & 24-hour **emergency** maintenance staff
- Conference rooms with seating for **8-40 people** available to tenants at **no charge**

Visit our website for a complete listing of available spaces:
garveycenter.com

To schedule a tour, email:
larry@garveycenter.com